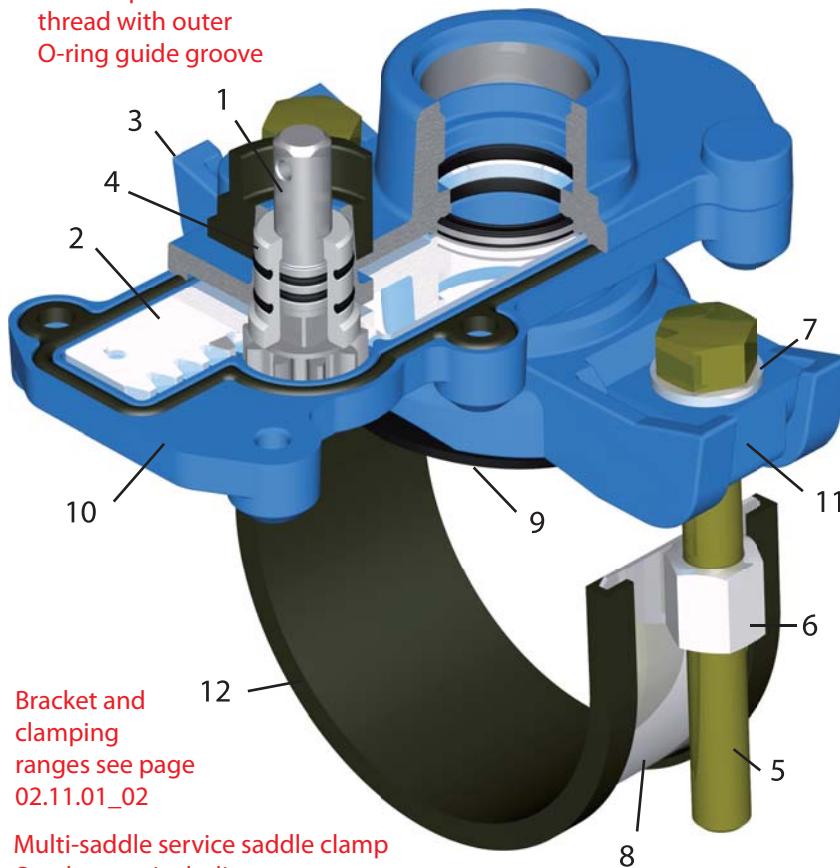


Universal service saddle clamp UNI - VAS - SST with SST - DAV Rp 1 1/2" IG for cast iron, steel and AC(FC) pipes Model 02.03.05.IG

Water PN 16
DN 80 - 400

Outlet Rp 1 1/2"
thread with outer
O-ring guide groove



Bracket and
clamping
ranges see page
02.11.01_02

Multi-saddle service saddle clamp
One bonnet including
seal for the dimensions DN 80 – 400.
Stainless steel retaining bracket with large
clamping range made of
Band 60 x 1.5 mm for GGG / ST
Band 90 x 1.5 mm for AC / FC

Pos.	Designation	Material
1	Stem	X20 Cr 13
2	Thrust slide disk	1.4571
3	Bonnet	EN-GJS-400-15
4	Stem bushing	POM
5	Bolts	V4A galv.
6	Nuts	V2A
7	Washer	V2A
8	Bracket	V2A
9	Gasket	EPDM
10	Coating	Epoxy resin - ESPC
11	Spherical cap	PA6GF
12	Insert	EPDM

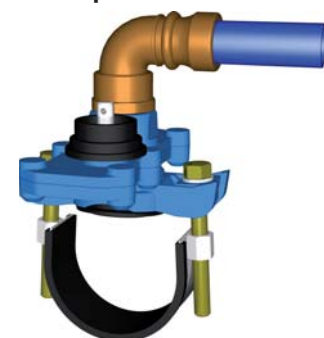
Screw connections:
Installation kits:

Pages 08.01 - 08.02
Pages 07.01 - 07.11

Adapter model 08.01.02



Adapter model 08.01.03



Tapping system with integrated
thrust slide disk; ½ turn
for "open" – "close"

Area of use: Potable water PN 16

Optionally on request: Gas PN 5
Gaskets made of NBR

Tapping valve tee tested in accordance with DVGW W 336 DVGW - Reg. no.: DW-6606BT0476

Universal service saddle clamp for fast, safe and permanent installation on pipes made of cast iron, steel and AC / FC pipe.

Retaining brackets, bolts and washers made of stainless steel.

Gaskets with DVGW W270 and KTW test certificate; EN 681-1WA.

Ductile cast iron top section made of EN-GJS according to DIN EN 1563; plastic-coated ESPC according to DVGW W 270. Knife gate valve with special thrust slide disk and solid thrust drive.

½ turn for "open" – "close" function

DN 350 - 600 see page 02.11 S03