

Universal service saddle clamp UNI - VAS - T

Water PN 16
DN 80 - 400

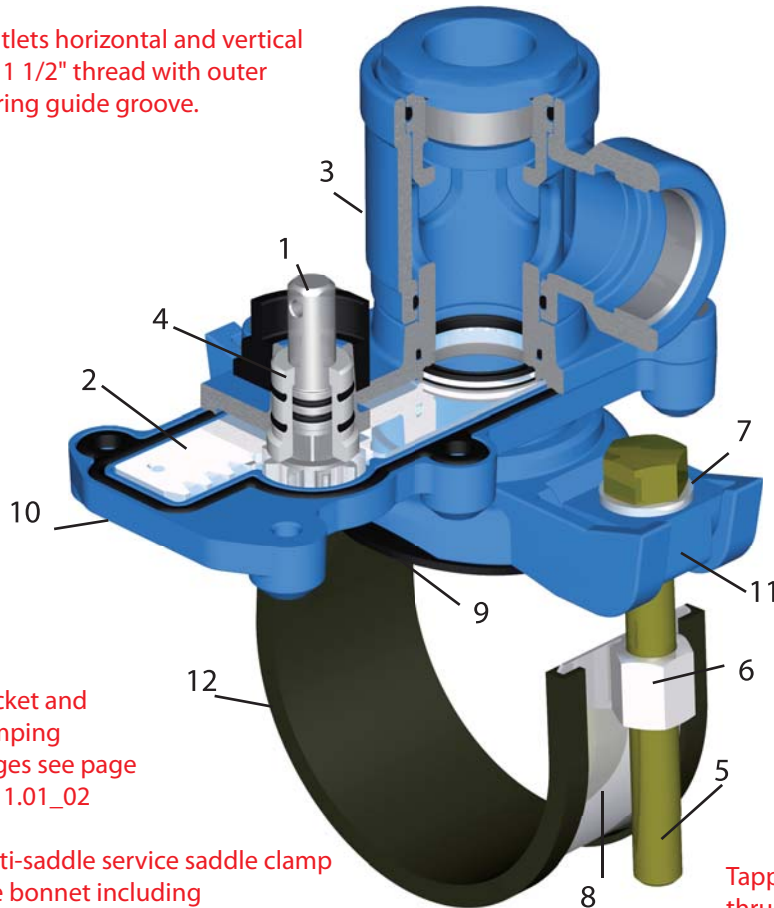
SST - DAV with pivot-mounted tapping tee

Outlet inner thread Rp 1 1/2" IG

for cast iron, steel and AC(FC) pipes

Model 02.03.06.IG

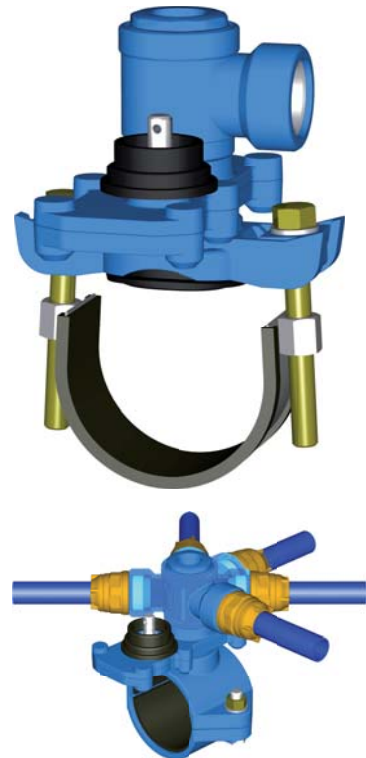
Outlets horizontal and vertical
Rp 1 1/2" thread with outer
O-ring guide groove.



Bracket and
clamping
ranges see page
02.11.01_02

Multi-saddle service saddle clamp
One bonnet including
gasket for the dimensions DN 80 – 400.
Stainless steel retaining bracket with large
clamping range made of
Band 60 x 1.5 mm for GGG / ST
Band 90 x 1.5 mm for AC / FC

| Pos. | Designation | Material |
|------|-------------------|------------------|
| 1 | Stem | X20 Cr 13 |
| 2 | Thrust slide disk | 1.4571 |
| 3 | Top section / tee | EN-GJS-400-15 |
| 4 | Stem bushing | POM |
| 5 | Bolts | V4A galv. |
| 6 | Nuts | V2A |
| 7 | Washer | V2A |
| 8 | Bracket | V2A |
| 9 | Gasket | EPDM |
| 10 | Coating | Epoxy resin ESPC |
| 11 | Spherical cap | PA6GF |
| 12 | Insert | EPDM |



Tapping tee can be pivoted
freely through 275°.

Tapping system with integrated
thrust slide disk; ½ turn
for "open" – "close"

Area of use: Potable water PN 16

Optionally on request: Gas PN 5

Gaskets made of NBR

Tapping valve tee in accordance with DVGW W 336

Universal service saddle clamp for fast, safe and permanent installation on pipes made of cast iron, steel and AC / FC pipe.

Tapping tee can be pivoted freely through 275°.

Retaining brackets, bolts and washers made of stainless steel.

Gaskets with DVGW W270 and KTW test certificate; EN 681-1WA.

Ductile cast iron top section made of EN-GJS according to DIN EN 1563; plastic-coated ESPC according to DVGW W 270.

Knife gate valve with special thrust slide disk and solid thrust drive.

½ turn for "open" – "close" function

DN 350 - 600 see page 02.11 S03

Screw connections:

Pages 08.01 - 08.02

Installation kits:

Pages 07.01 - 07.11

Schoppenkamp 9 • 45883 Gelsenkirchen • Fon +49 (209) 944104-0 • Fax + 49(209) 944104-20 • Internet www.vaf-voigt.de