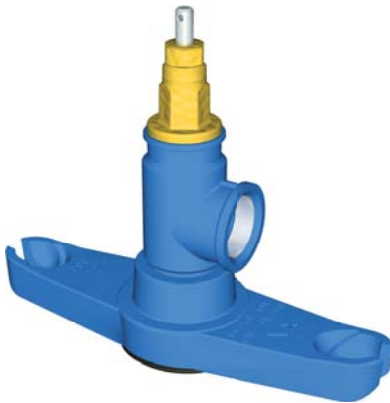


Universal service saddle clamps UNI - VAS

for cast iron, steel, AC and PVC pipes

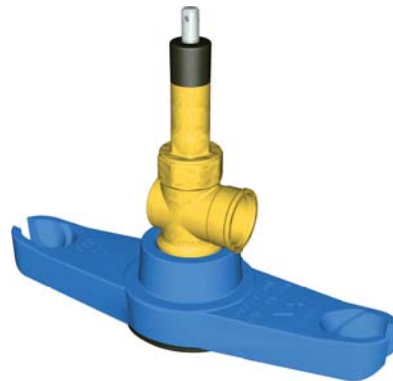
DN 350 – DN 600

connector pieces with gaskets



Model 02.03.02 **Art. no.: 02.03.02.11**

UNI - VAS with GGG - corner valve Rp2"
Tapping system with ball auxiliary valve



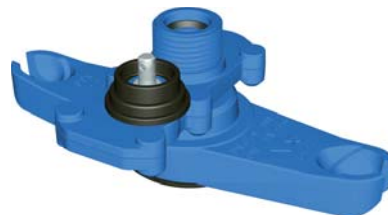
Model 02.03.01 **Art. no.: 02.03.01.11**

UNI - VAS with brass corner valve Rp 1 1/2"
"Union" tapping system with piston valve



Model 02.03.05.IG **Art. no.: 02.03.05.11.IG**

UNI - VAS - SST with SST - DAV Rp 1 1/2"
Tapping system with integrated thrust slide disk



Model 02.03.05.TG **Art. no.: 02.03.05.11.TG**

UNI - VAS - SST with SST - DAV trapezoidal thread
Tapping system with integrated thrust slide disk



Model 02.03.06.IG **Art. no.: 02.03.06.11.IG**

UNI - VAS - T with pivot-mounted tapping tee
Outlet Rp 1 1/2"
UNI - VAS - T with pivot-mounted tapping tee



Model 02.03.06.TG **Art. no.: 02.03.06.11.TG**

UNI - VAS - T with pivot-mounted tapping tee
Outlet trapezoidal thread
Tapping system with integrated thrust slide disk

Brackets and clamping ranges see pages 02.11 S02

More detailed descriptions of the individual models can be found on the respective catalogue pages.

Screw connections: Pages 08.01 - 08.02

Installation kits: Pages 07.01 - 07.11