

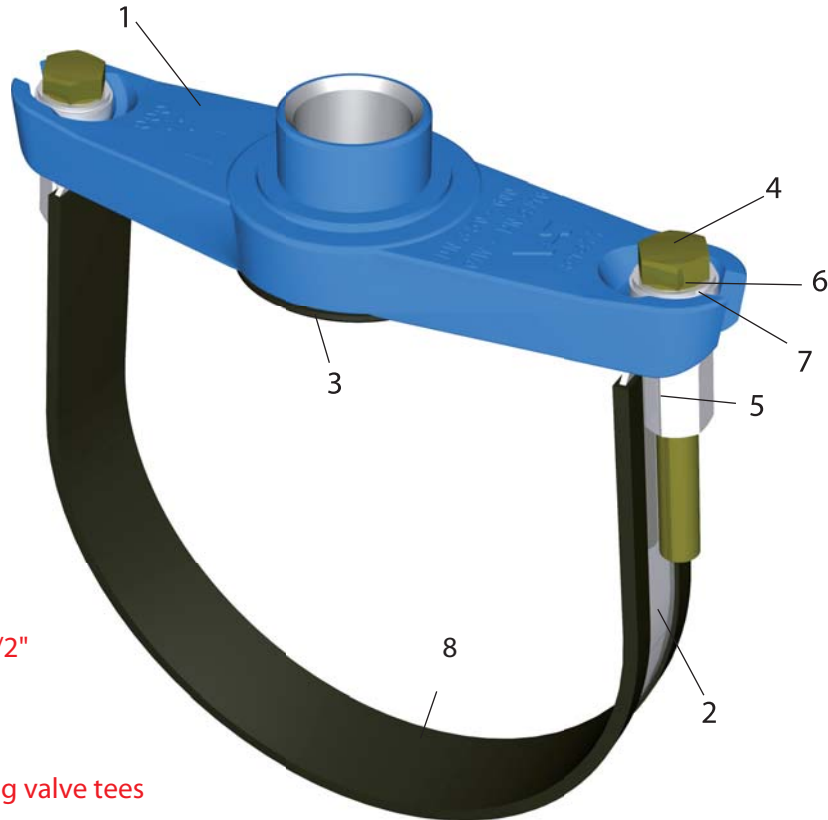
Universal service clamp UNI - AS

as a tapping and stopper key setting fitting
for cast iron, steel, AC/FC and PVC pipes

Water PN 16
Gas PN 4

Model 02.11
DN 350 - DN 600

02.11.004
AS - G2"



Outlet versions:

- Service clamp G 1" - G 2 1/2"
- Blind clamp
- Sluice tapping system A
- Sluice tapping system B
- See pages 05.04 for tapping valve tees

Design versions

Bracket and clamping
ranges see page 02.11 S02

Multi-saddle service clamp; one bonnet including gasket for the dimensions DN 80 – 400.
Stainless steel retaining bracket including rubber insert with large clamping ranges made of
Band 60 x 3.0 mm for GGG / ST
Band 90 x 3.0 mm for FC / AC / PVC

Area of use:

Water PN 16
Gas PN 4

Universal service clamp for fast, safe and permanent installation on pipes made of cast iron, steel, AC / FC and PVC pipe.

Retaining brackets, bolts and washers made of stainless steel.

Gasket made of NBR rubber according to DIN EN 682, KTW with DVGW-reg.

Retaining piece made of EN-GJS-400-15 according to DIN EN 1563; plastic-coated ESPC.

(Version for use with gas with gasket made of NBR 80 according to EN 682.)

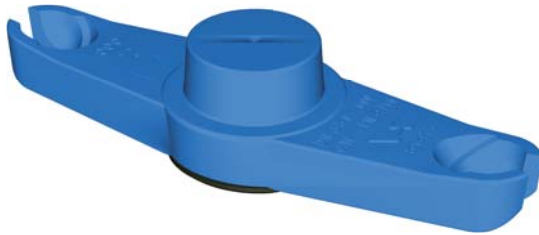
Pos.	Designation	Werkstoff
1	Retaining piece	EN-GJS-400-15
2	Clamp	A2-1.4301
3	Gasket	NBR 70
4	Bolts	A4-1.4571+galv.
5	Nuts	A2-1.4301
6	Washer	A2-1.4301
7	Spherical cap	A2-1.4301
8	Rubber insert	EPDM

Universal service clamp

as a tapping and stopper key setting fitting
for cast iron, steel, AC and PVC pipes

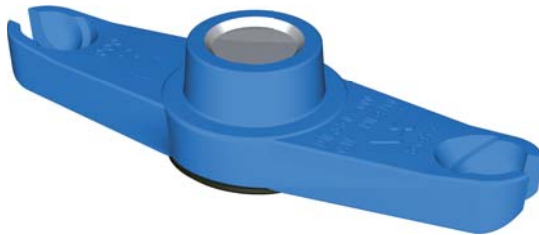
Model 02.11
DN 350 – DN 600

**Connecting pieces with
seals**



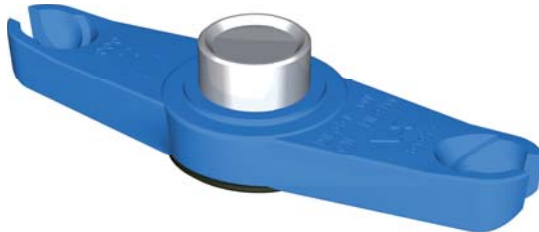
Model 02.11.000
Universal blind clamp

Art. no.: 02.11.000



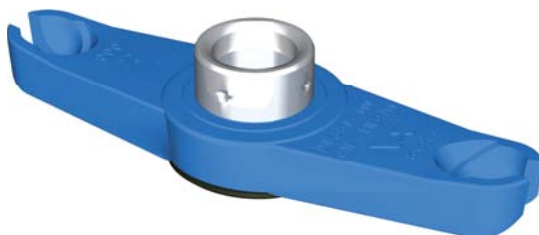
Model 02.11.004
Universal service clamp with G 2" inner thread

Art. no.: 02.11.004



Model 02.11.034
Universal service clamp with outlet for
sluice tapping system A.
2½" outer thread and 2" inner thread; for safety plugs with 2
O-rings - model 08.6.3.50. For tapping without escape of gas
and the setting of stopper keys.

Art. no.: 02.11.034



Model 02.11.065
Universal service clamp with outlet for
sluice tapping system B.
Connection d 80 mm chuck head with 4x90° countersinks and 2¼"
inner thread, for safety plugs with 1 or 2 O-rings; model
08.06.07.60; 08.06.08.60 and 08.06.12.60.
For tapping without escape of gas and the setting of stopper keys
with inner passage d 61 mm.

Art. no.: 02.11.065

Other plug and outlet systems on request

Bracket		Band 60 x 3 mm for GGG / ST		Band 90 x 3 mm for AC / PVC	
Clamping range		Article number			
D min.	D max.	Rubber insert	With rubber insert	Without rubber insert	With rubber insert
356	416	02.11.01.350	02.11.01.350 G	02.11.02.350	02.11.02.350 G
419	470	02.11.01.400	02.11.01.400 G	02.11.02.400	02.11.02.400 G
470	520	02.11.01.450	02.11.01.450 G	02.11.02.450	02.11.02.450 G
520	571	02.11.01.500	02.11.01.500 G	02.11.02.500	02.11.02.500 G
571	620	02.11.01.501	02.11.01.501 G	02.11.02.501	02.11.02.501 G
620	670	02.11.01.600	02.11.01.600 G	02.11.02.600	02.11.02.600 G
670	720	02.11.01.601	02.11.01.601 G	02.11.02.601	02.11.02.601 G